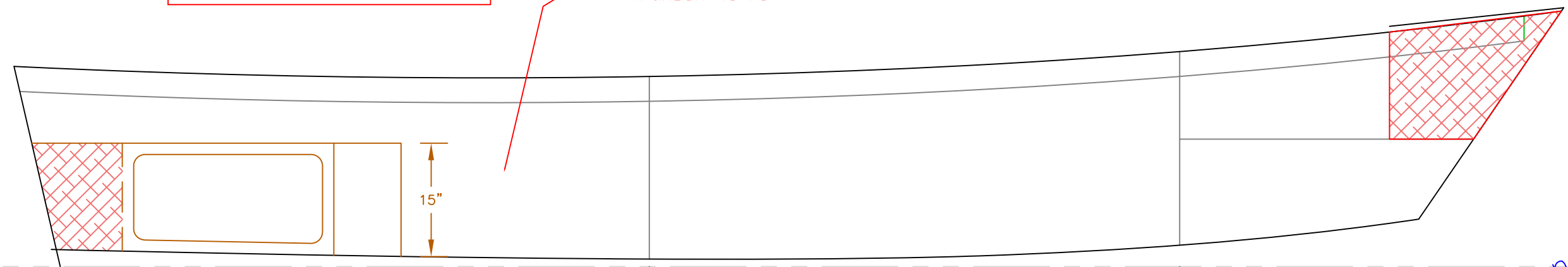
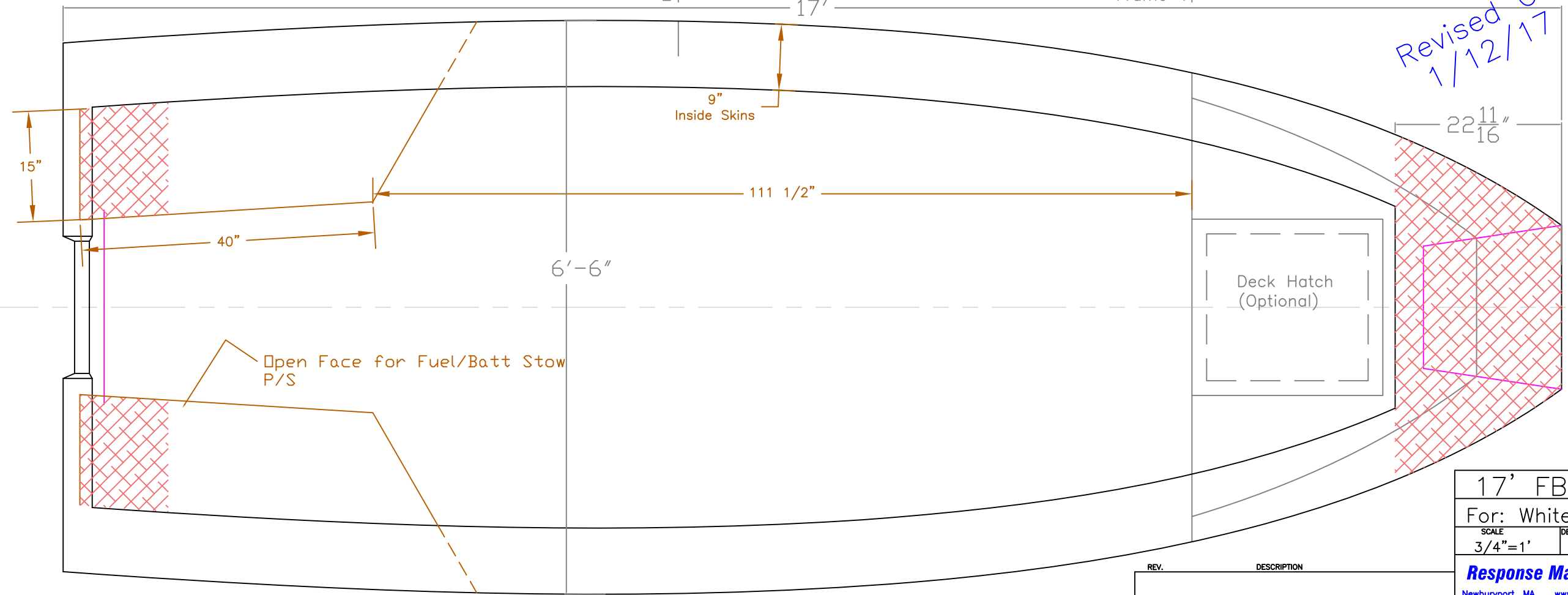


Total Foam = 35 Ft³

~9" thick Foam at Sides,
Gunnel Top to 3" from Bottom
Transom to F1



Revised Gunnels & Foam
1/12/17



17' FB SKIFF		
For: White Metal Welding		
SCALE 3/4"=1'	DES/DWN WAL	DATE 1/12/17
REV.		REV.
DESCRIPTION		DWG NO. 552-P7
Response Marine, Inc. Newburyport, MA, www.responsemarine.com		