

Waterlines:
 A- Base Boat, Dockside
 B- A+ 4 Crew
 C- B+ 1,000# Tumbler Gear
 D- C+ 2,000# Oysters

D, 7,700# @ 11.4'
 C, 5,700# @ 12.3'
 B, 4,700# @ 13.3'
 A, 4,250# @ 13.1'

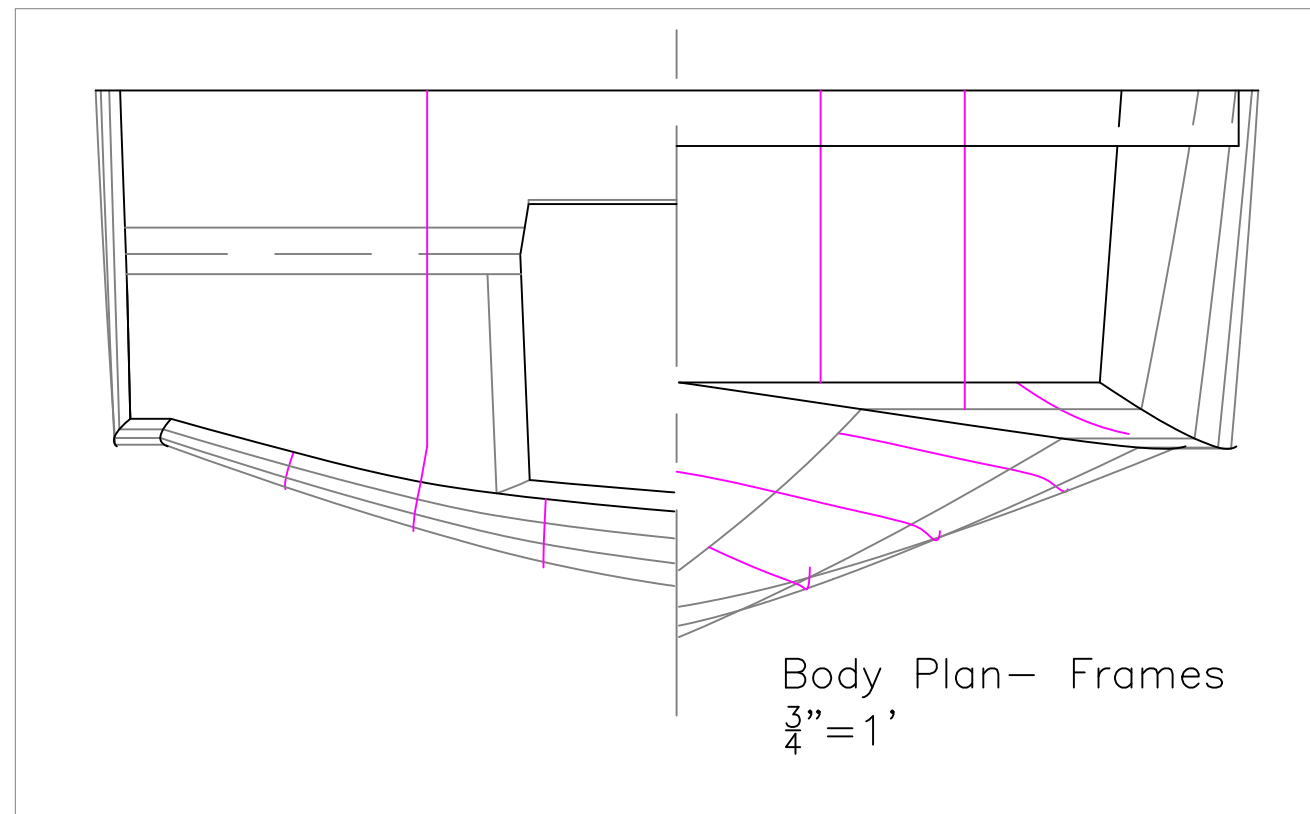
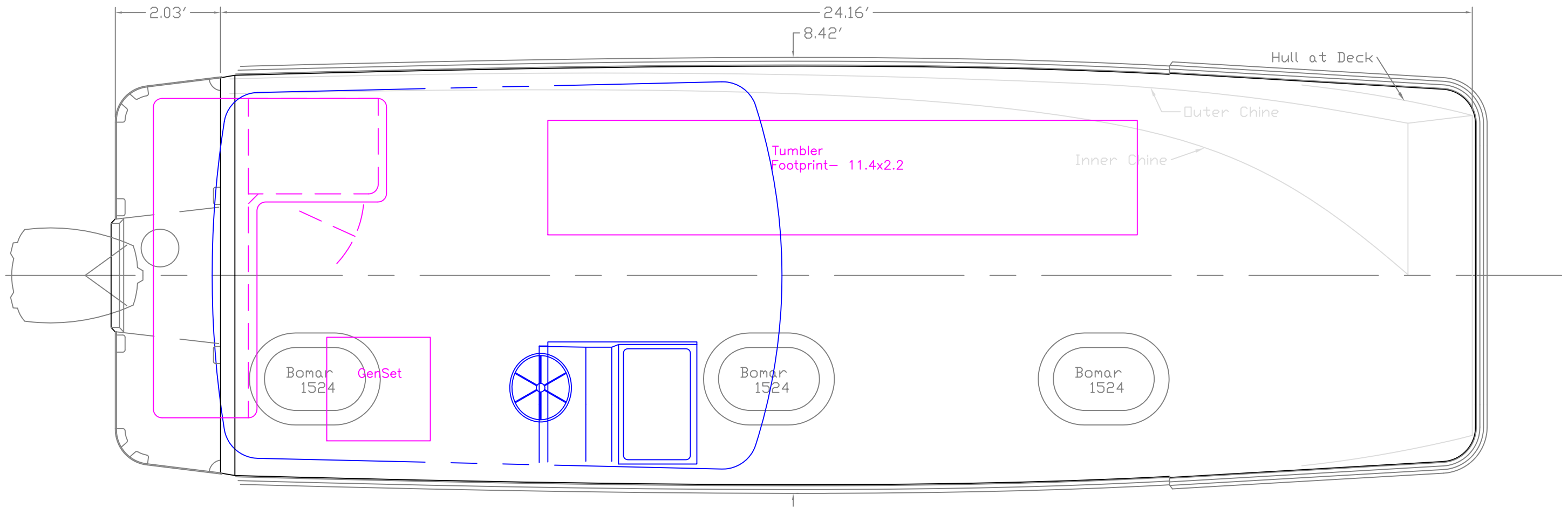
OUTBOARD PROFILE

24' Flush Deck V
 For: White Metal Welding

SCALE 1/2" = 1'	DES/DWN WAL	DATE 10/17/16
--------------------	----------------	------------------

Response Marine, Inc.
 Newburyport, MA, www.responsemarine.com
 SHEET
 DWG NO. 538-1

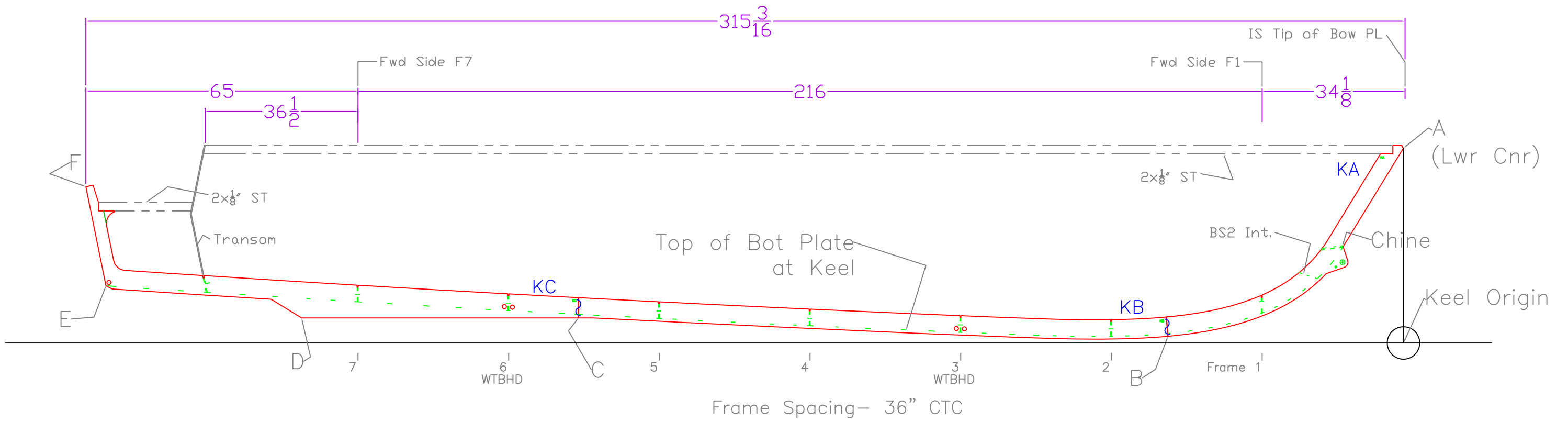
REV.	DESCRIPTION



OUTBOARD PLAN & BODY PLAN

24' Flush Deck V		
For: White Metal Welding		
SCALE 1/2" = 1'	DES/DWN WAL	DATE 10/17/16
Response Marine, Inc.		SHEET
Newburyport, MA, www.responsemarine.com		DWG NO. 538-2

REV.	DESCRIPTION



Response Marine, Inc.						
#538 WMW 24' FDV 10/14/16						
Keel Points						
	Inches- sixteenths		Feet			
	Horizontal	Vertical	Horizontal	Vertical		
A to Origin	0	46 8/16	0.0000	3.8768		
B to Origin	56 4/16	1 9/16	4.6885	0.1328		
C to Origin	197 2/16	6	16.4253	0.4983		
D to Origin	263 4/16	6	21.9380	0.4983		
E to Origin	310	13 10/16	25.8316	1.1379		
F to Origin	314 13/16	37 5/16	26.2325	3.1082		
ALIGNED (INCHES)						
	A	B	C	D	E	F
A to	0	72	201 4/16	266 6/16	311 11/16	314 15/16
B to		0	140 15/16	207 1/16	254	261
C to			0	66 2/16	113 2/16	121 13/16
D to				0	47 6/16	60 5/16
E to					0	24 2/16
F to						0

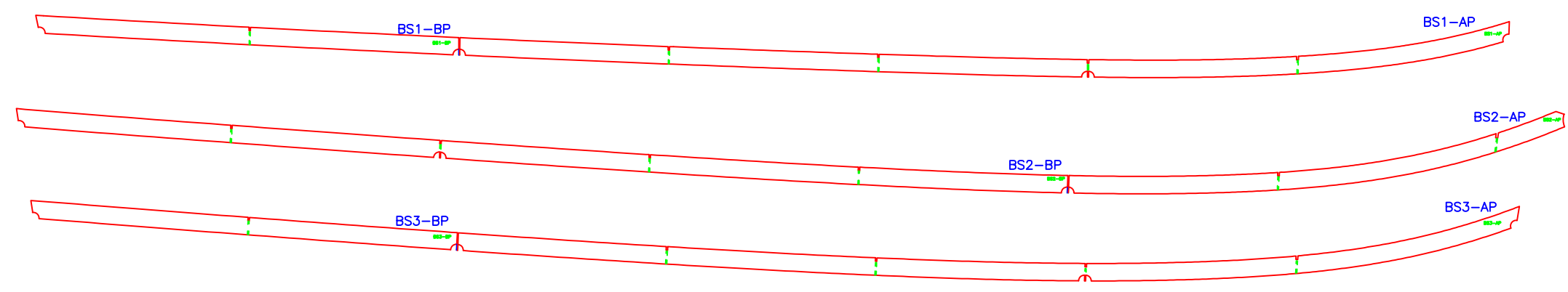
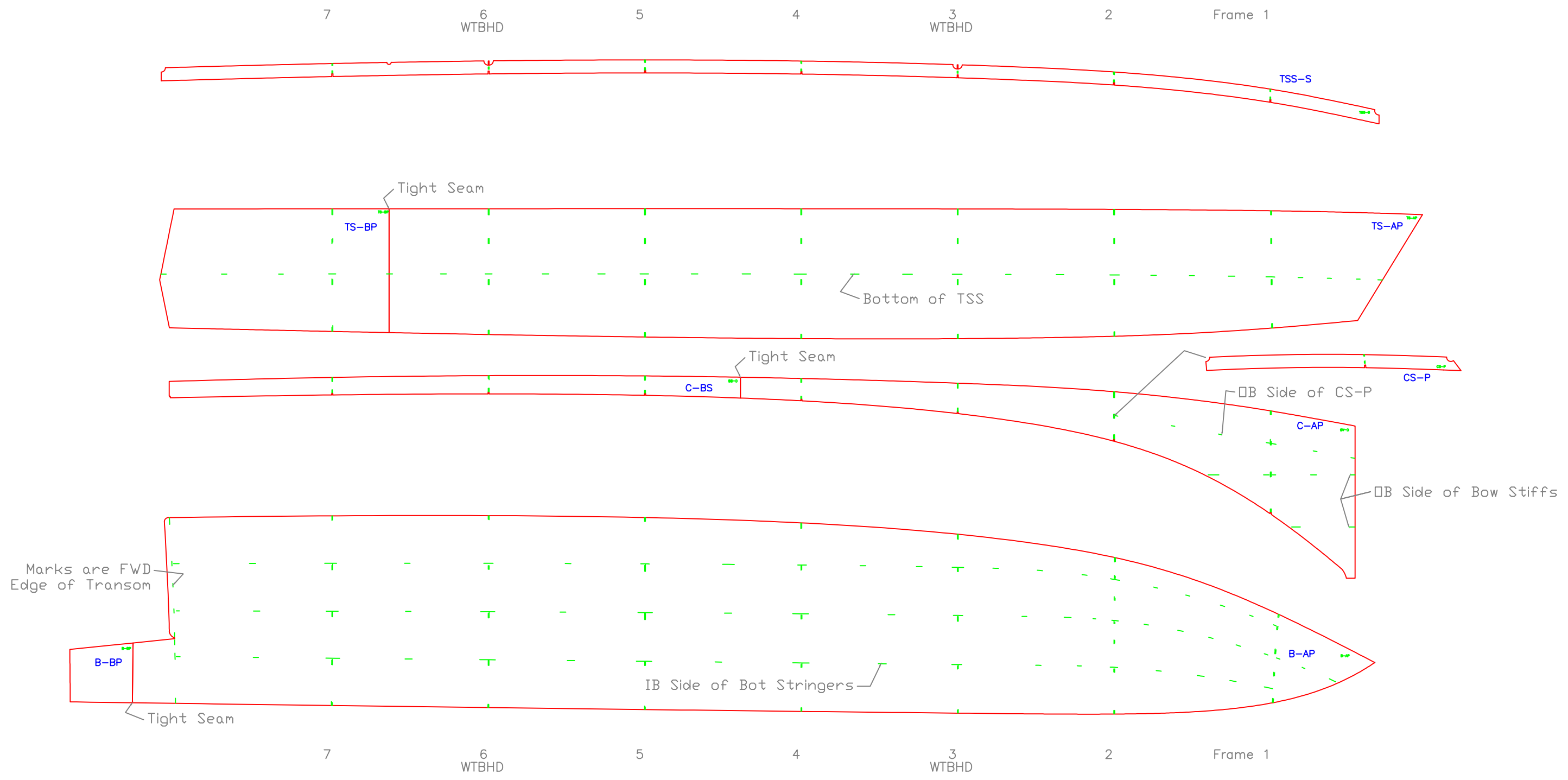
KEEL LAYOUT

24' Flush Deck V
For: White Metal Welding

SCALE 1/2" = 1'	DES/DWN WAL	DATE 10/17/16
--------------------	----------------	------------------

Response Marine, Inc. Newburyport, MA, www.responsemarine.com	SHEET DWG NO. 538-2-1
---	--------------------------

REV. DESCRIPTION



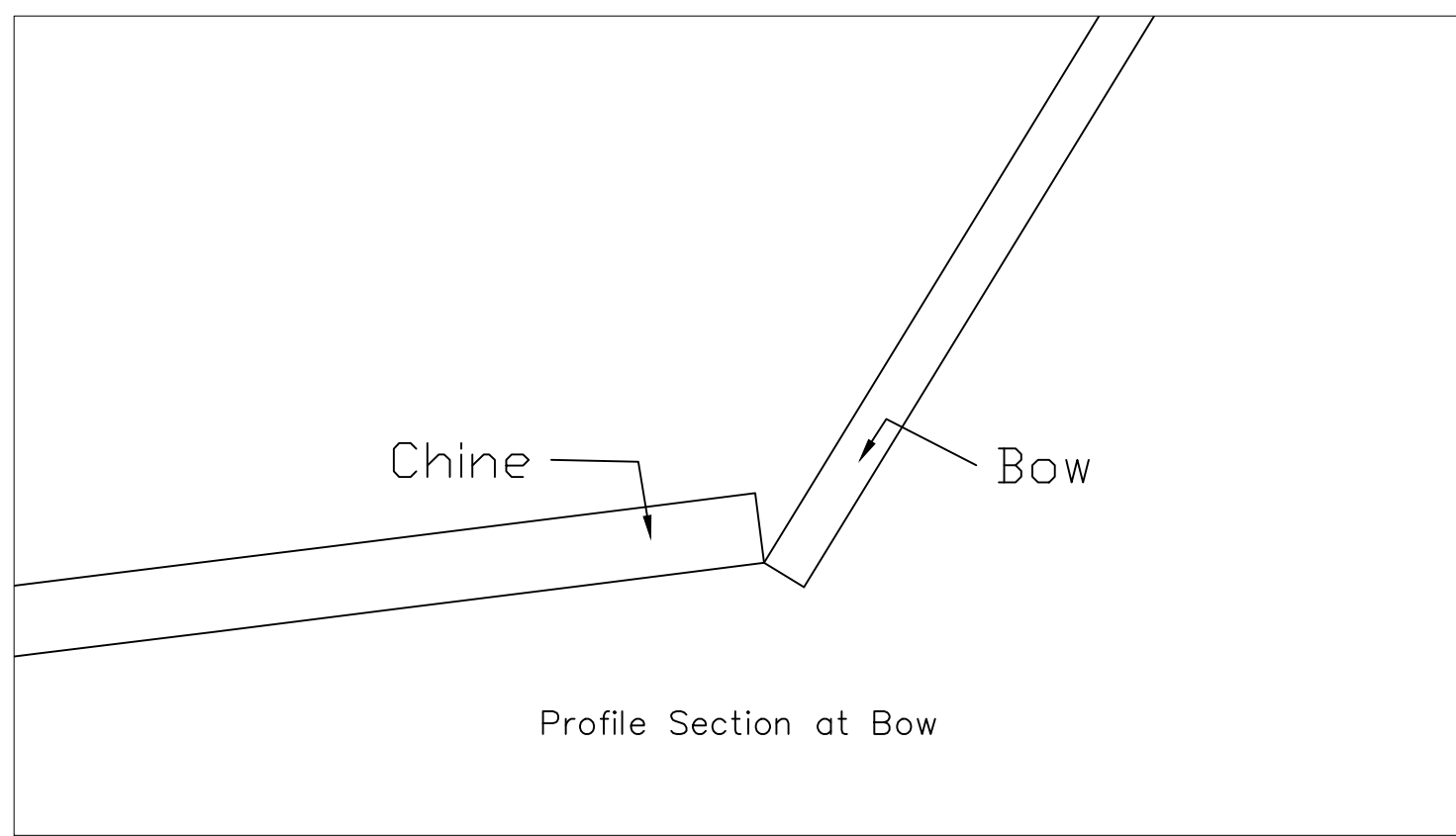
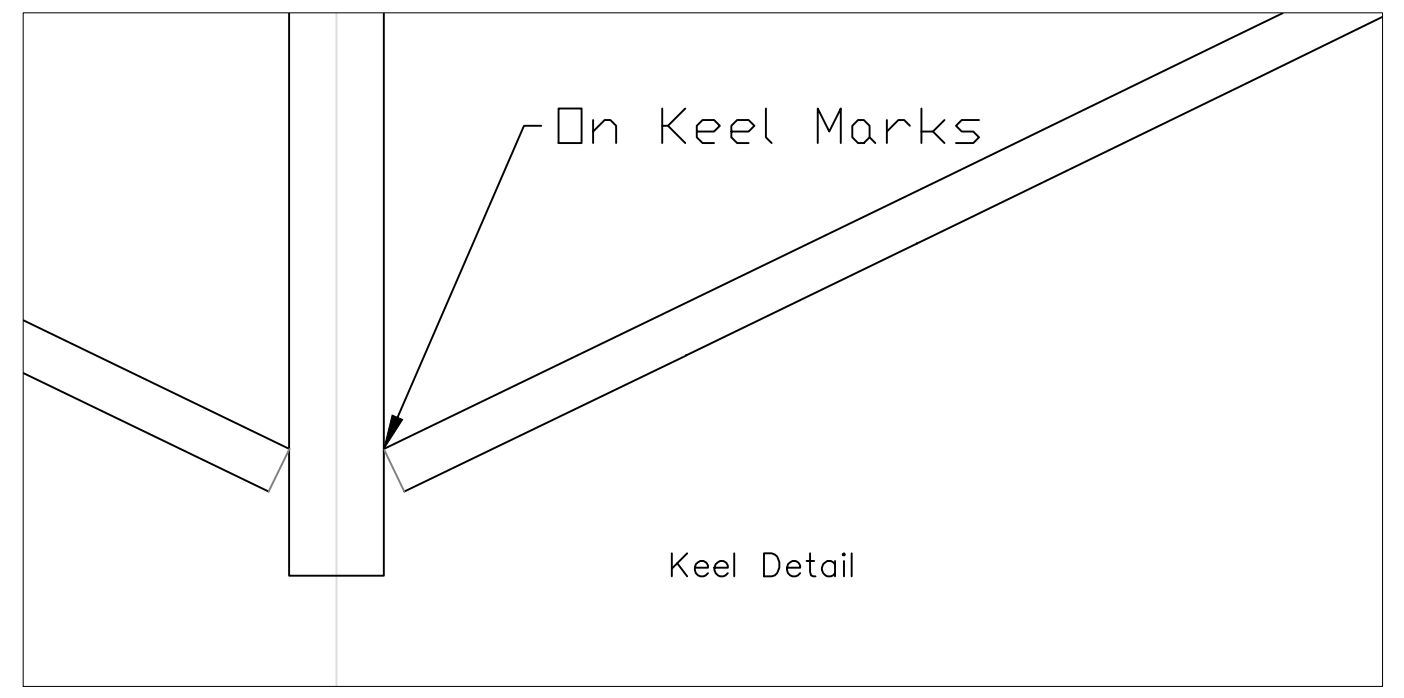
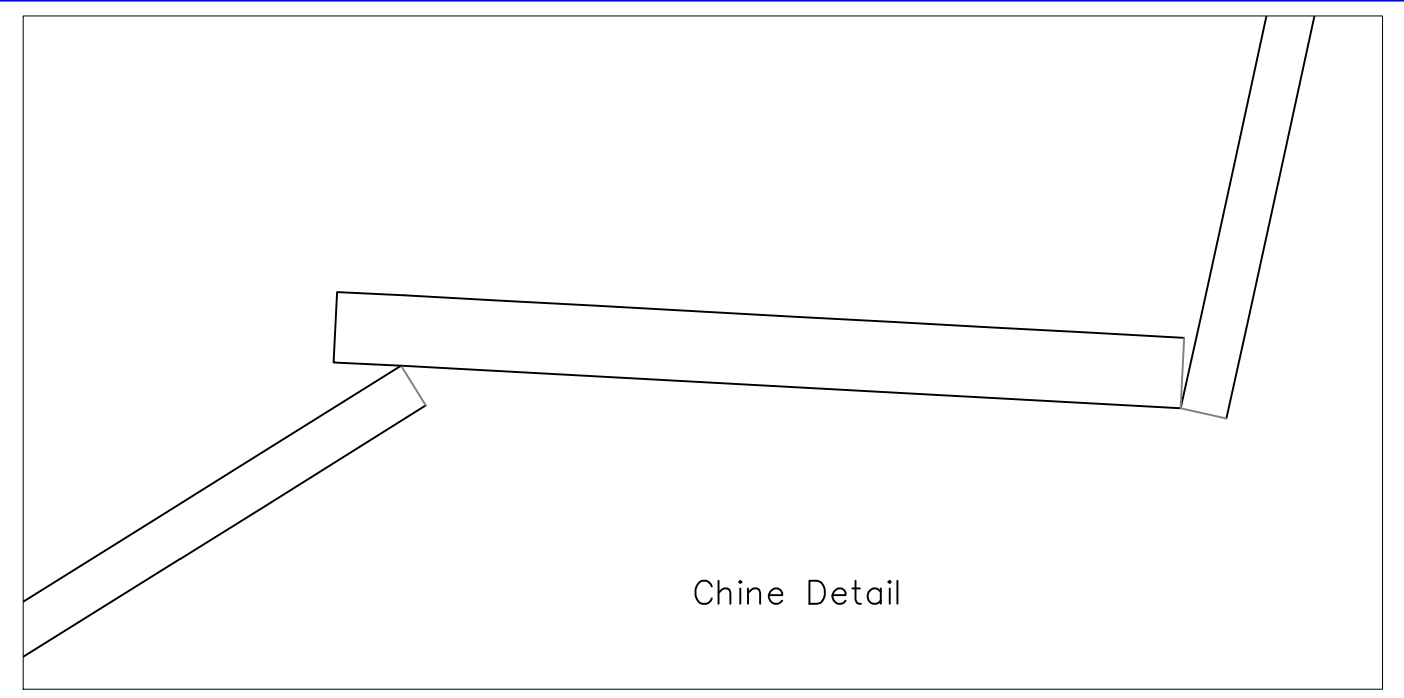
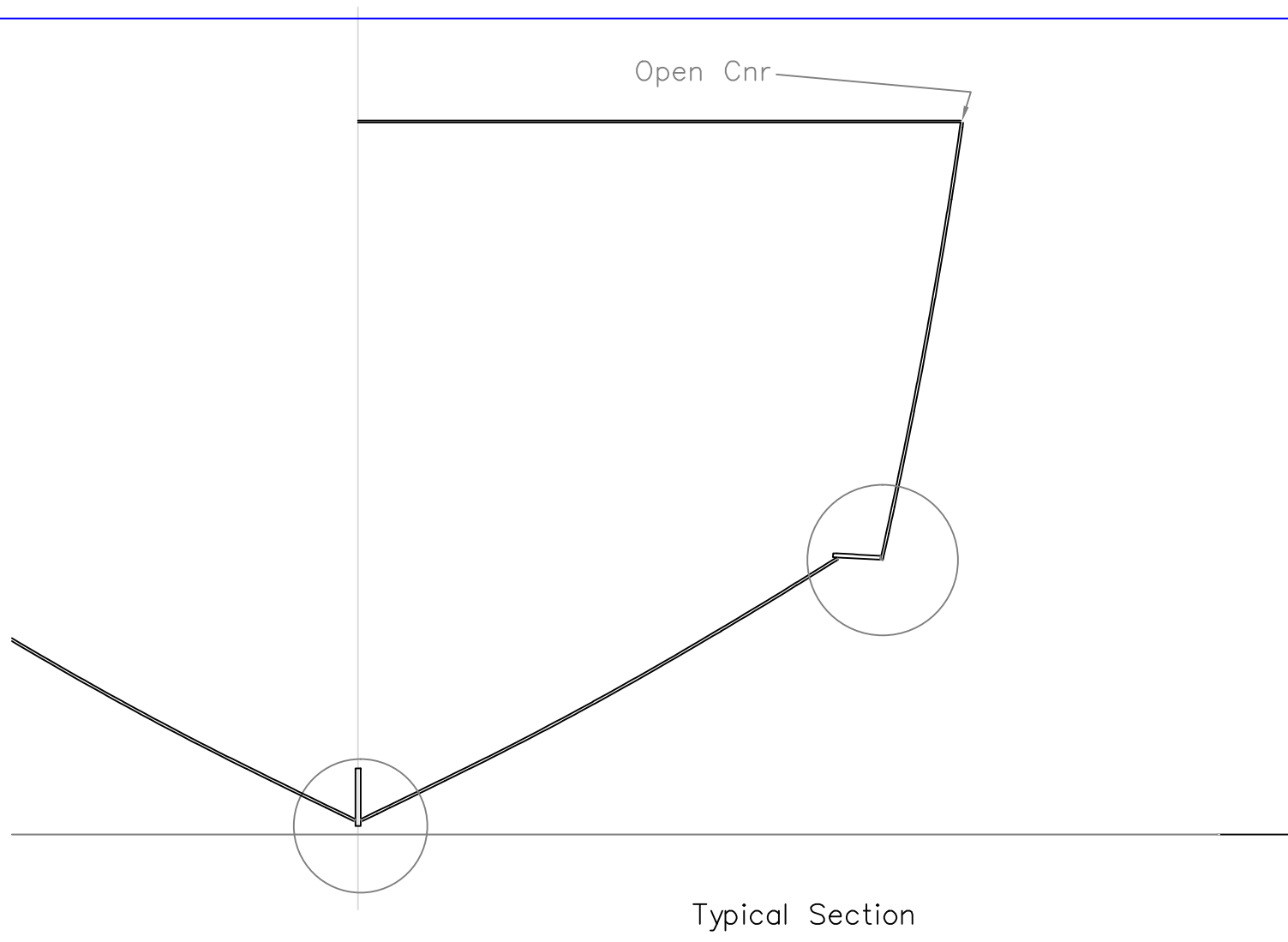
HULL SKINS

24' Flush Deck V

For: White Metal Welding

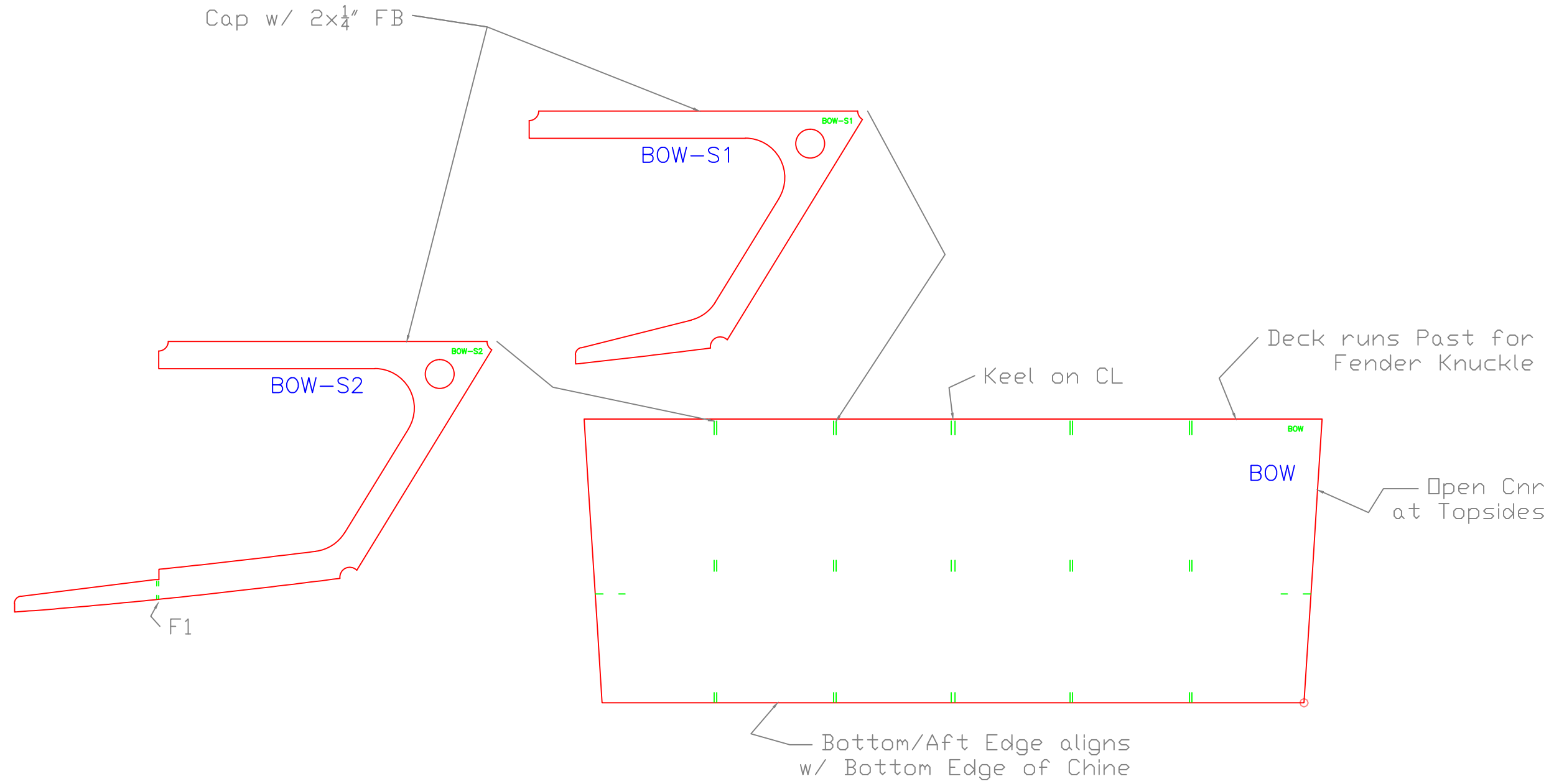
SCALE 1/2" = 1'	DES/DWN WAL	DATE 10/17/16
Response Marine, Inc. Newburyport, MA, www.responsemarine.com		SHEET DWG NO. 538-2-2

REV.	DESCRIPTION



REV.	DESCRIPTION

Hull Joint Details		
24' Flush Deck V		
For: White Metal Welding		
SCALE NONE	DES/DWN WAL	DATE 10/17/16
Response Marine, Inc. Newburyport, MA, www.responsemarine.com		SHEET DWG NO. 538-2-3

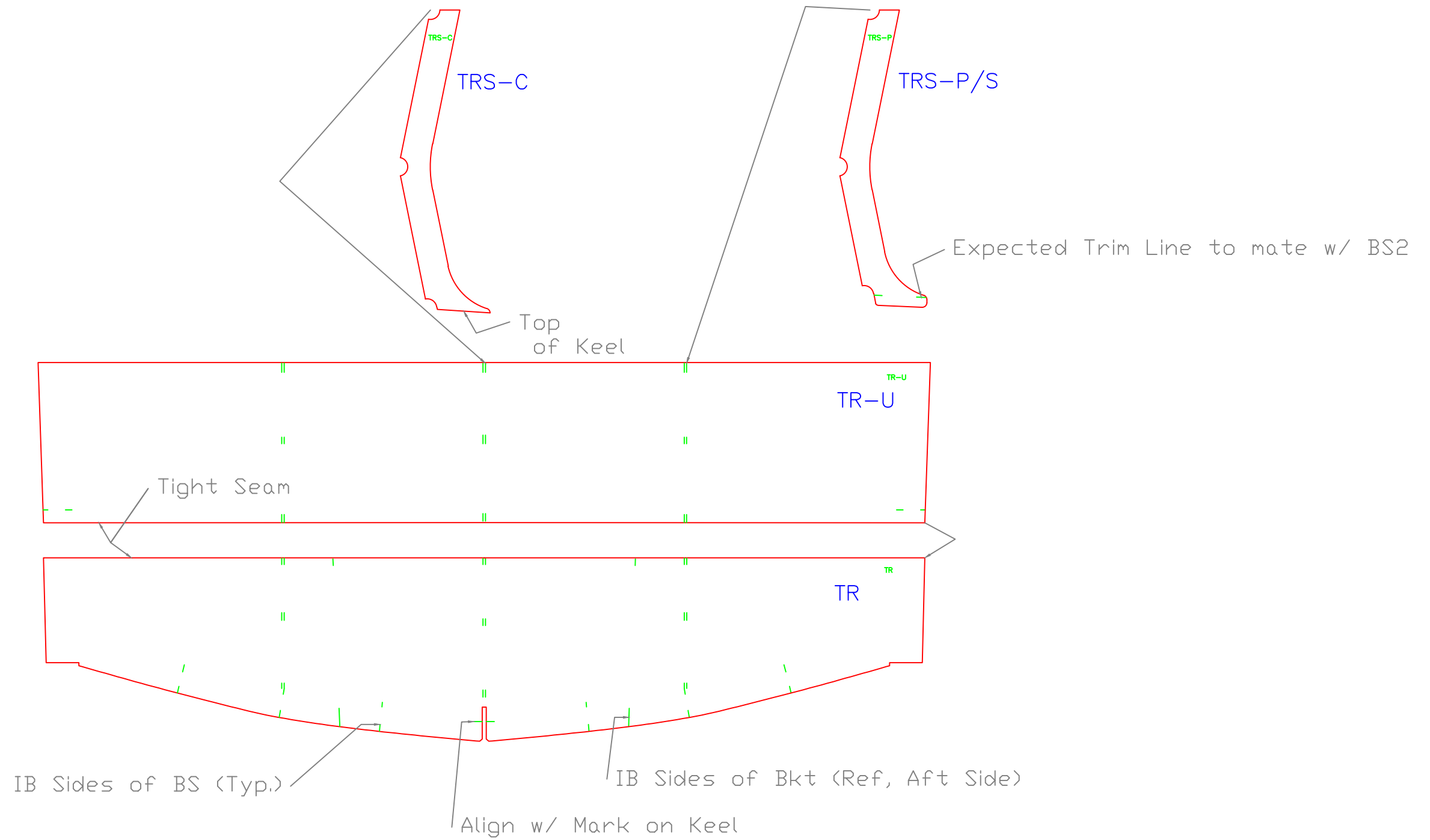


BOW
 24' Flush Deck V
 For: White Metal Welding

SCALE 1" = 1'	DES/DWN WAL	DATE 10/17/16
------------------	----------------	------------------

REV.	DESCRIPTION

Response Marine, Inc.
 Newburyport, MA, www.responsemarine.com
 SHEET
 DWG NO. 538-2-4



TRANSOM

24' Flush Deck V

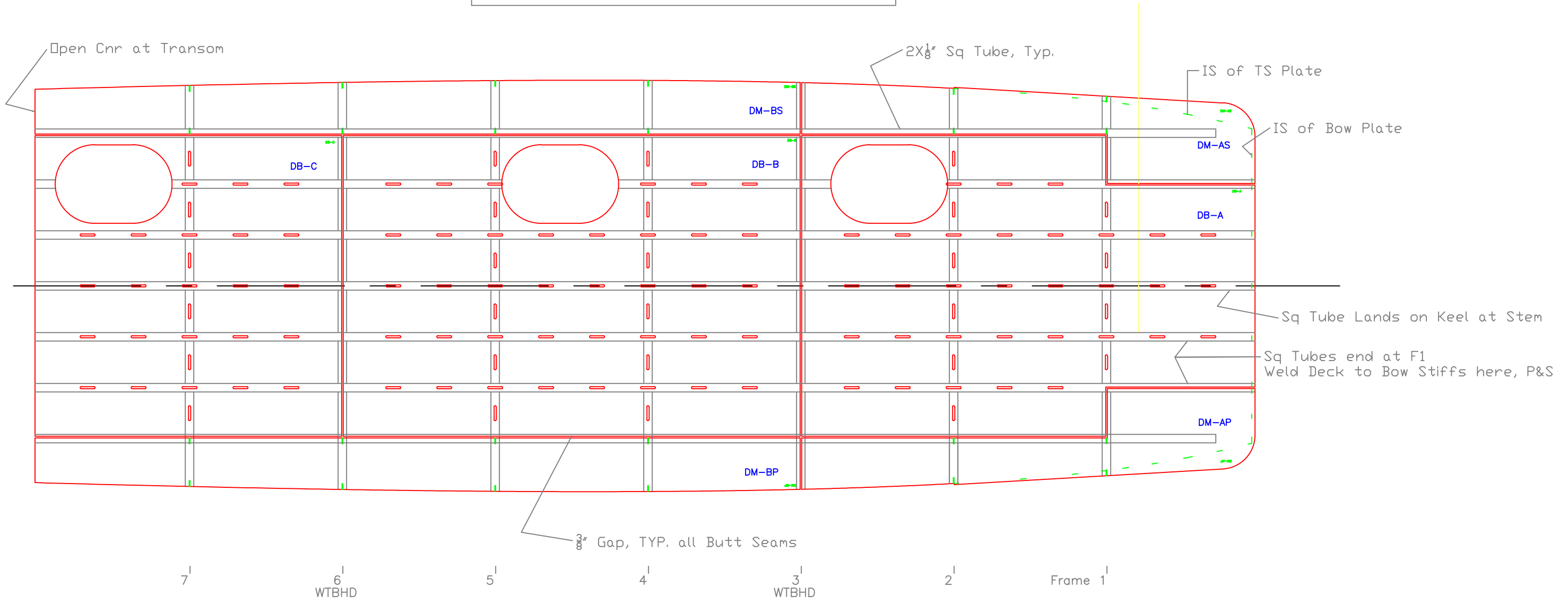
For: White Metal Welding

SCALE 1" = 1'	DES/DWN WAL	DATE 10/17/16
------------------	----------------	------------------

Response Marine, Inc.		SHEET
Newburyport, MA, www.responsemarine.com		DWG NO. 538-2-5

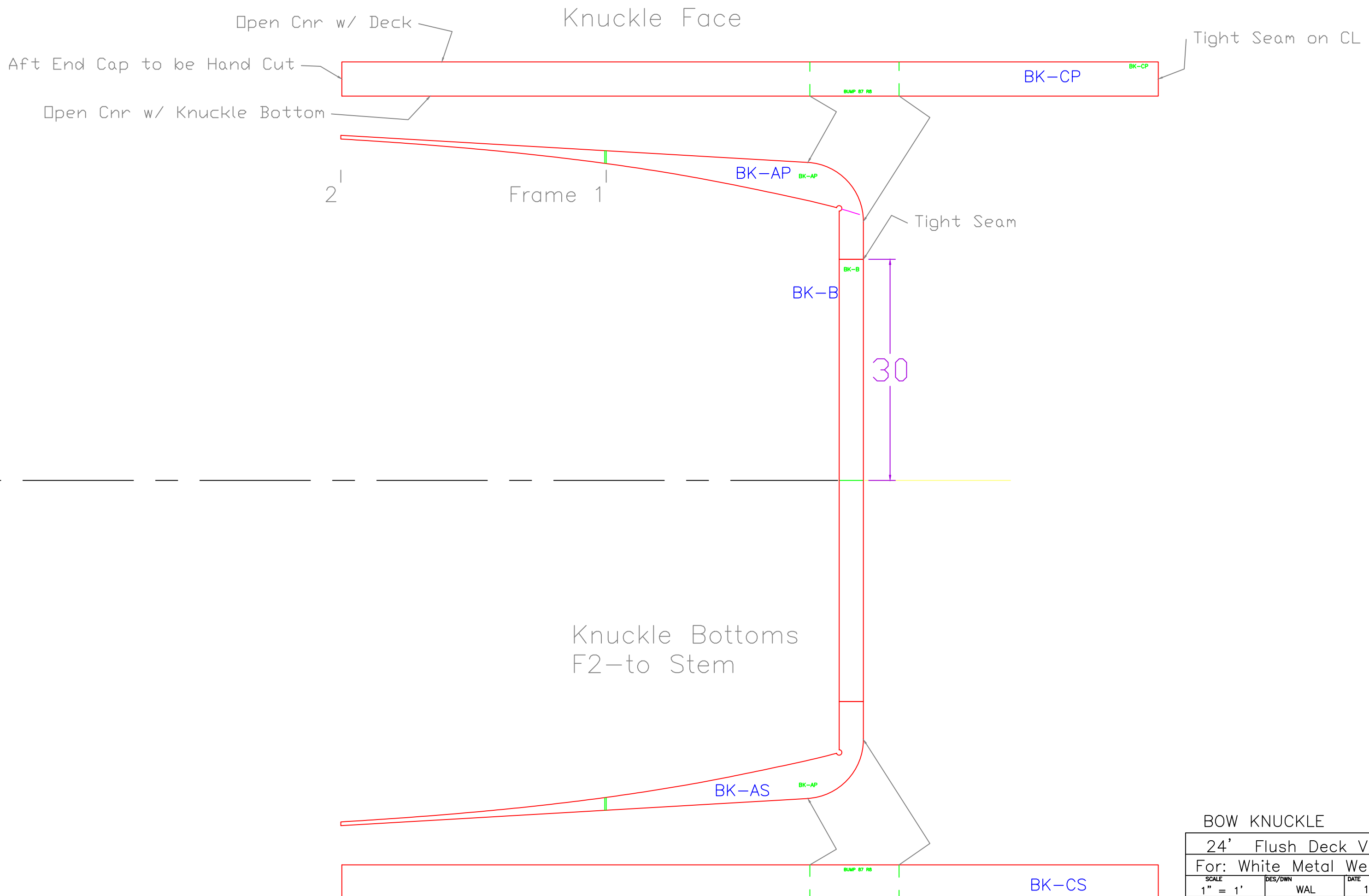
REV.	DESCRIPTION

MAIN DECK— Viewed from BELOW.



MAIN DECK		
24' Flush Deck V		
For: White Metal Welding		
SCALE 1/2" = 1'	DES/DWN WAL	DATE 10/17/16
Response Marine, Inc. Newburyport, MA, www.responsemarine.com		SHEET DWG NO. 538-2-6

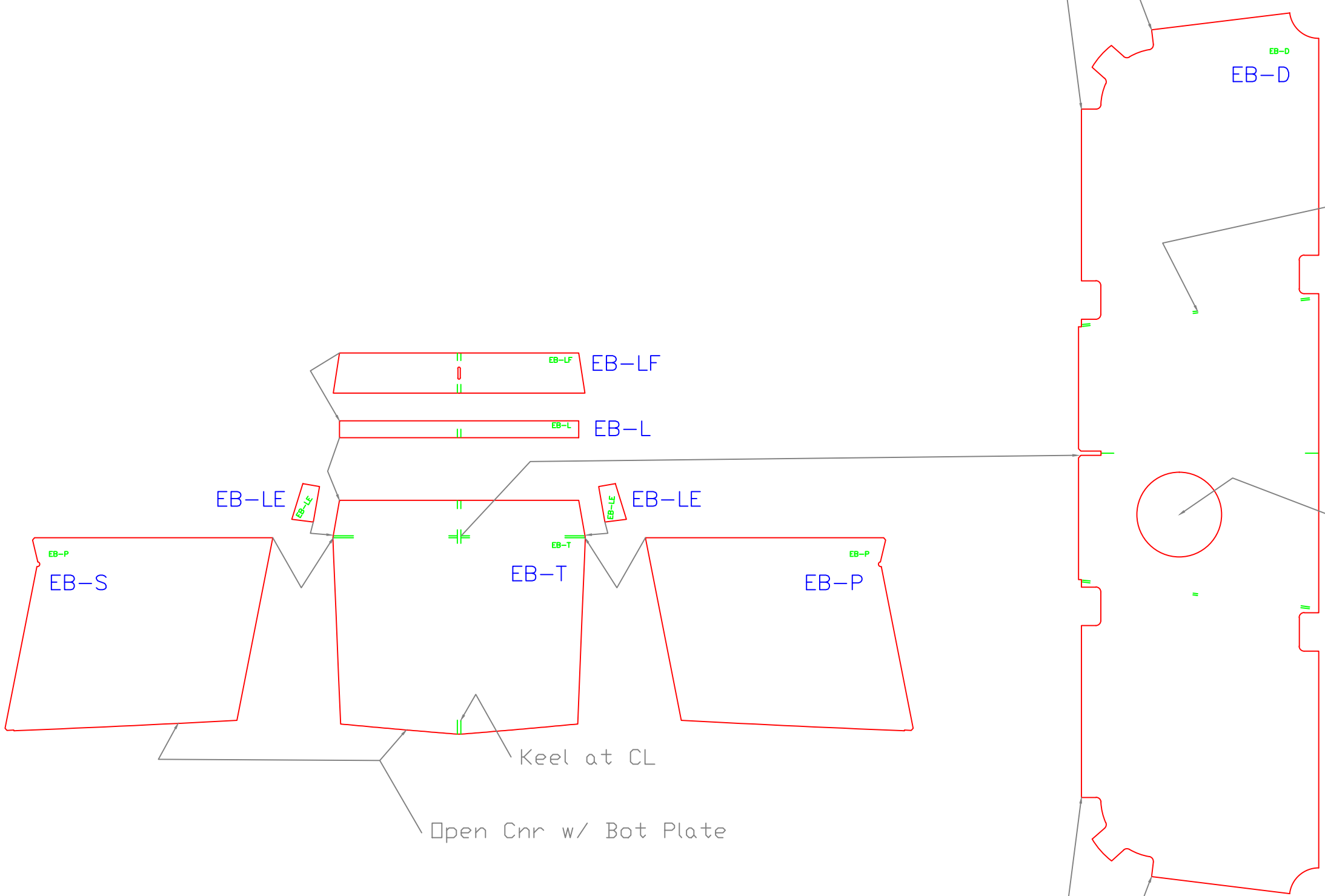
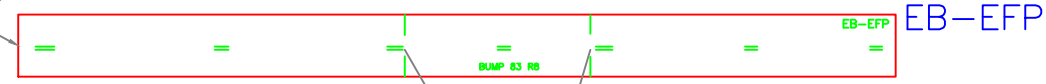
REV.	DESCRIPTION



BOW KNUCKLE		
24' Flush Deck V		
For: White Metal Welding		
SCALE 1" = 1'	DES/DWN WAL	DATE 10/17/16
Response Marine, Inc. Newburyport, MA, www.responsemarine.com		SHEET DWG NO. 538-2-7

REV.	DESCRIPTION

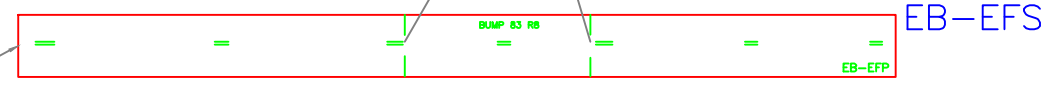
Each End is 1 1/2" Long for Trim



Bracket sides

Armstrong DP-8
(8.75 CD, 10" OD)

Each End is 1 1/2" Long for Trim



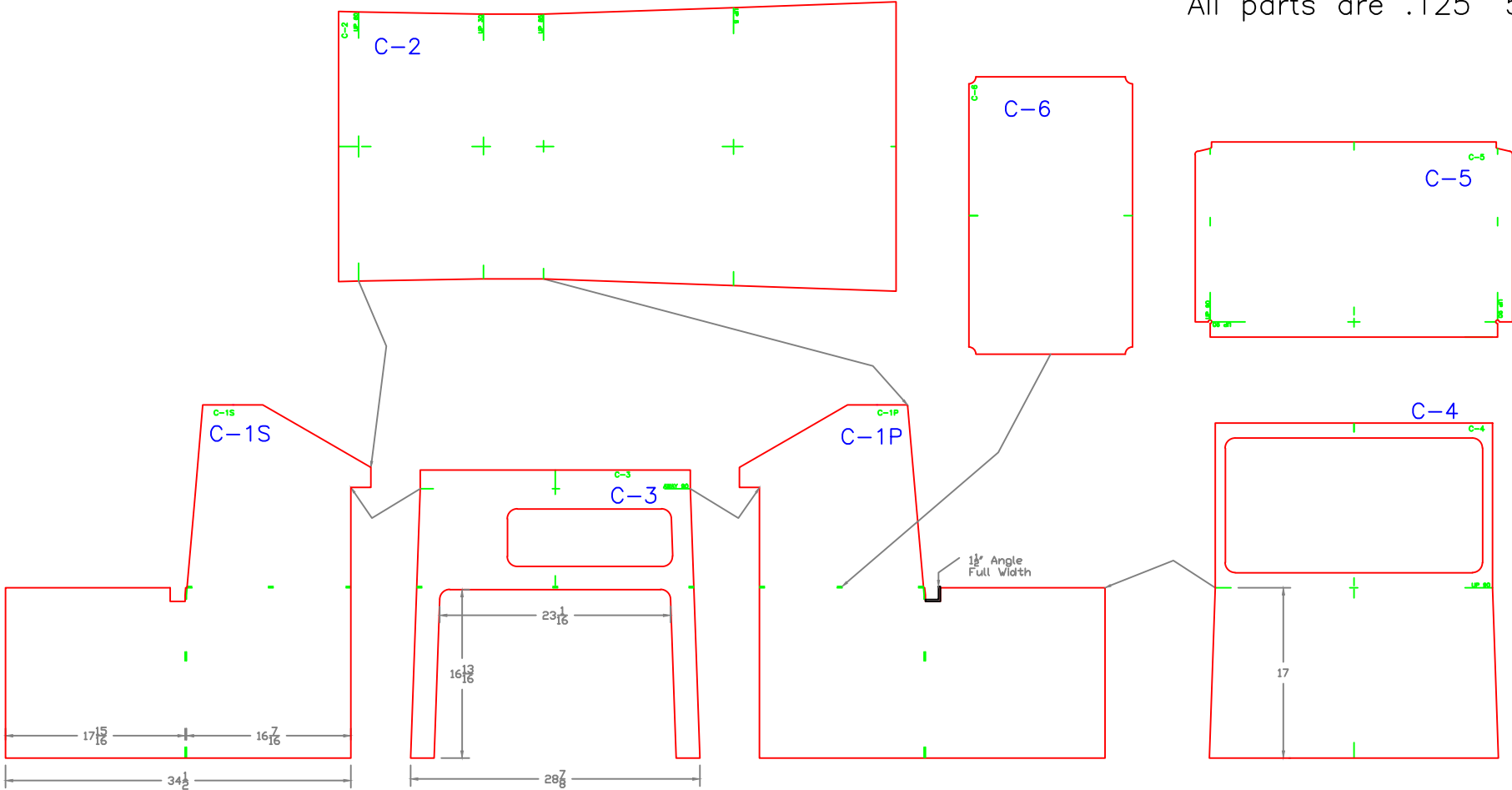
ENGINE BRACKET & DECK
24' Flush Deck V
For: White Metal Welding

SCALE 1" = 1'	DES/DWN WAL	DATE 10/17/16
------------------	----------------	------------------

Response Marine, Inc. Newburyport, MA, www.responsemarine.com	SHEET DWG NO. 538-2-8
---	-----------------------------

REV.	DESCRIPTION

All parts are .125" 5052



CONSOLE

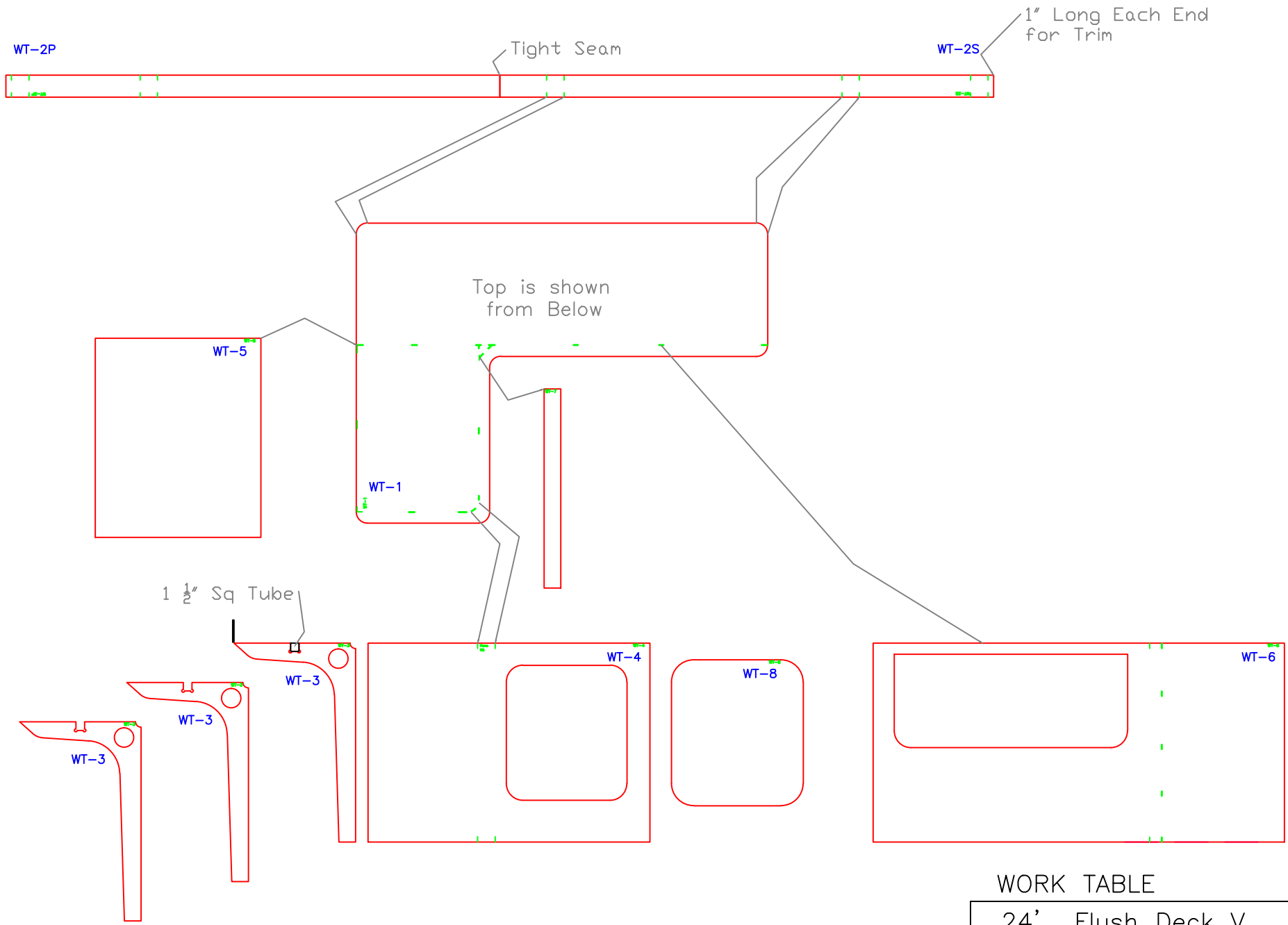
24' Flush Deck V
 For: White Metal Welding

SCALE 3/4" = 1'	DES/DWN WAL	DATE 10/17/16
--------------------	----------------	------------------

SHEET	
DWG NO. 538-4-1	

REV.	DESCRIPTION

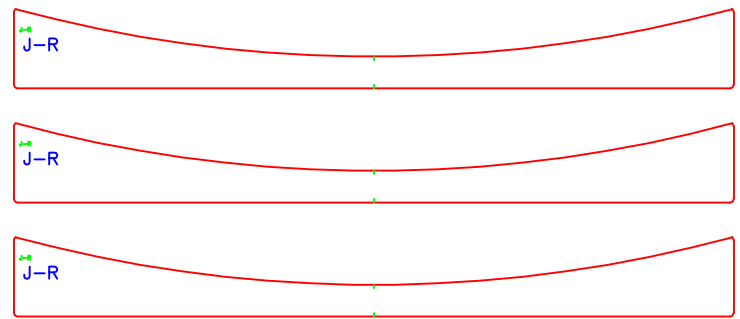
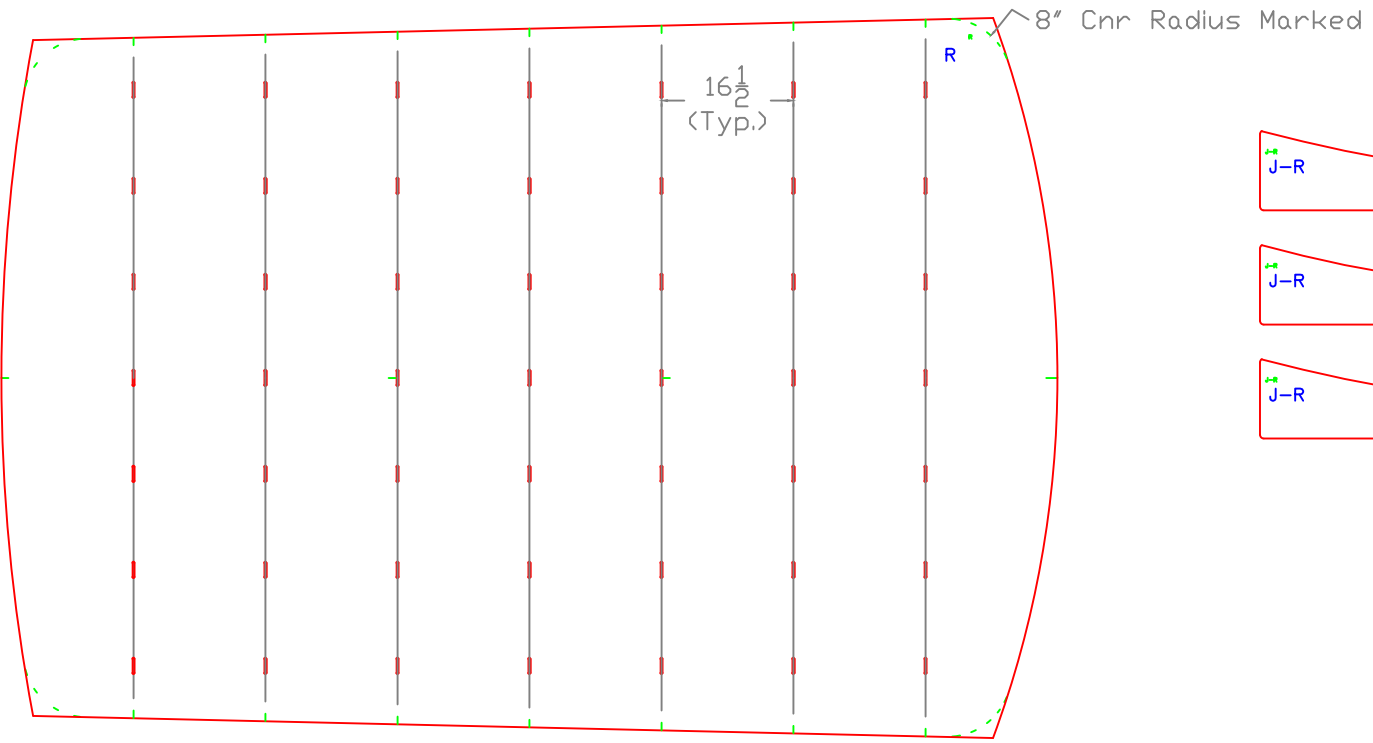
Response Marine, Inc.
 Newburyport, MA, www.responsemarine.com



WORK TABLE

24' Flush Deck V		
For: White Metal Welding		
SCALE 1/2" = 1'	DES/DWN WAL	DATE 10/17/16
Response Marine, Inc. Newburyport, MA, www.responsemarine.com		SHEET DWG NO. 538-4-2

REV.	DESCRIPTION

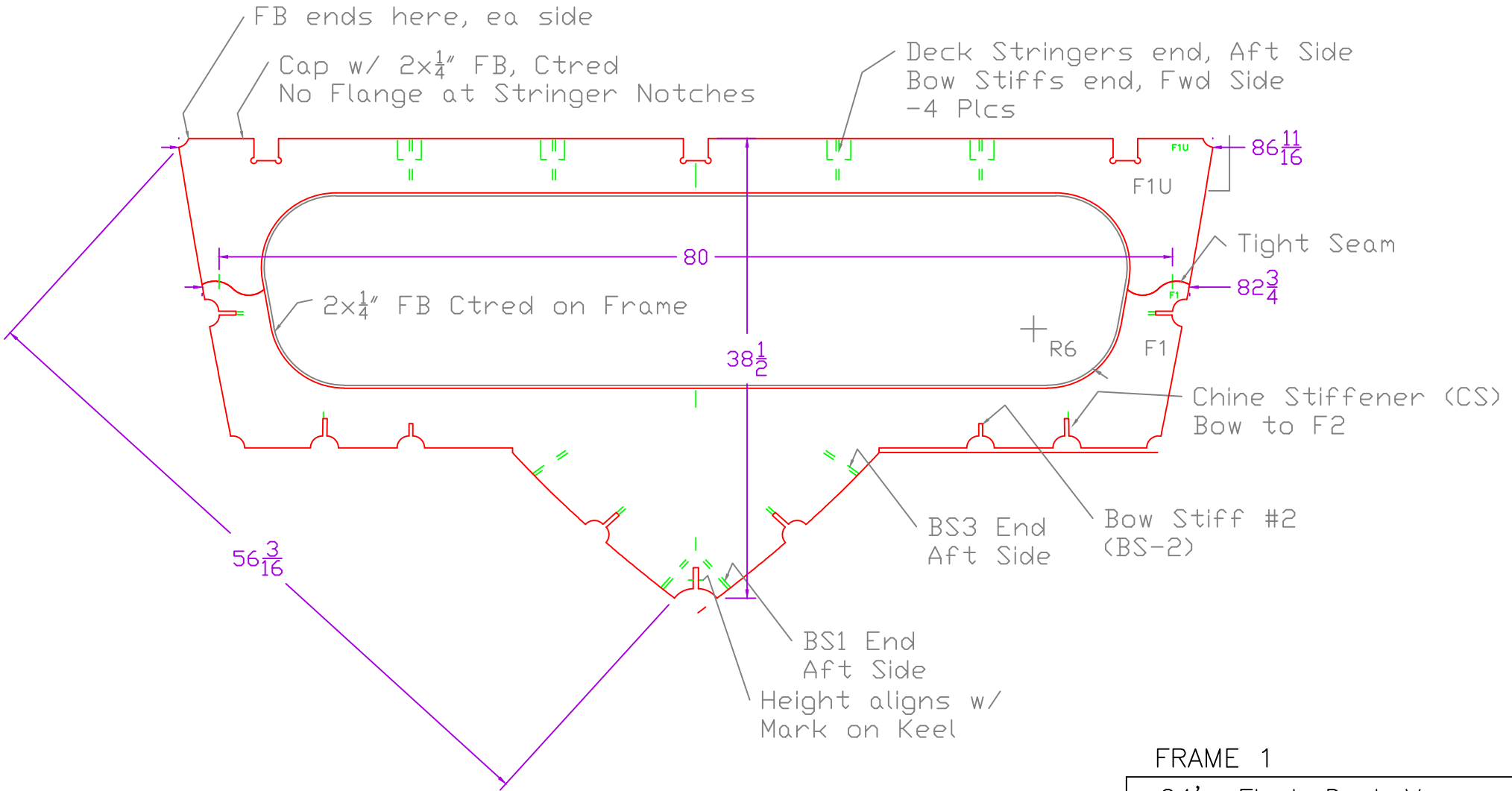


ROOF

24' Flush Deck V		
For: White Metal Welding		
SCALE 1/2" = 1'	DES/DWN WAL	DATE 10/17/16
Response Marine, Inc. Newburyport, MA, www.responsemarine.com		SHEET DWG. NO. 538-4-3

REV.	DESCRIPTION

F1 Lk'g Fwd Install w/ Marks Aft

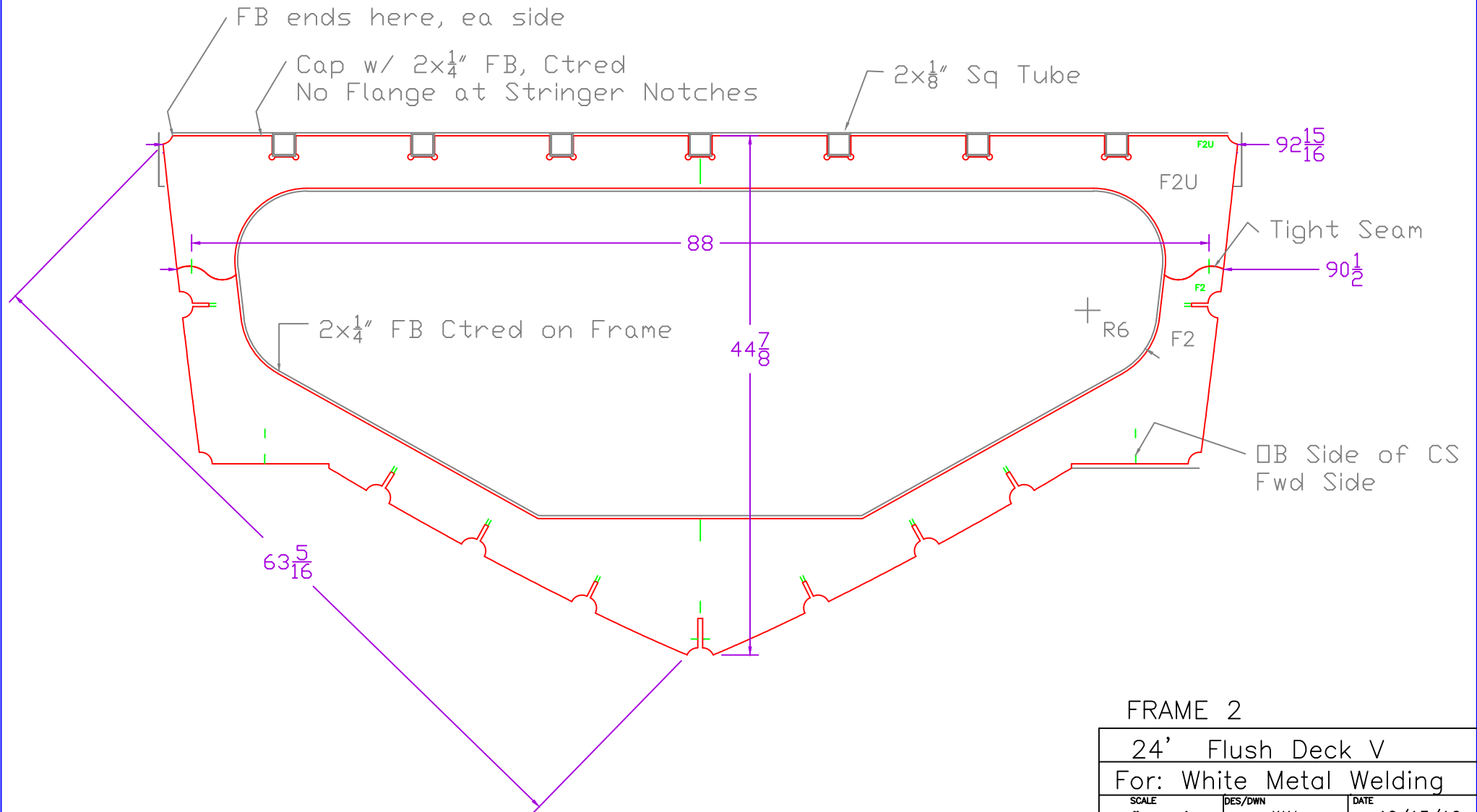


FRAME 1

24' Flush Deck V		
For: White Metal Welding		
SCALE 1" = 1'	DES/DWN WAL	DATE 10/13/16
Response Marine, Inc. Newburyport, MA, www.responsemarine.com		SHEET DWG NO. 538-F1

REV.	DESCRIPTION

F2 Lk'g Fwd
Install w/ Marks Aft



FRAME 2

24' Flush Deck V		
For: White Metal Welding		
SCALE 1" = 1'	DES/DWN WAL	DATE 10/13/16
Response Marine, Inc. Newburyport, MA, www.responsemarine.com		SHEET DWG NO. 538-F2

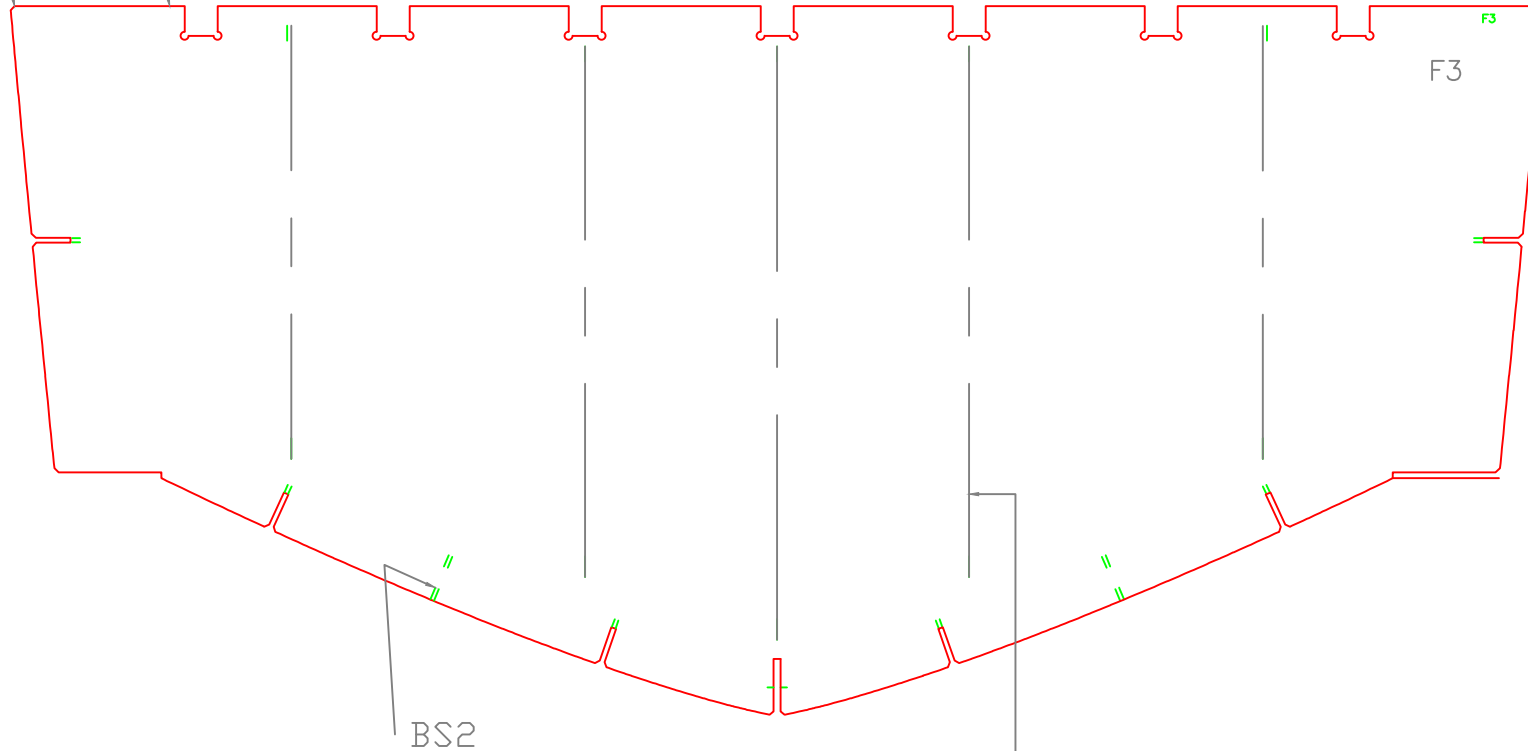
REV.	DESCRIPTION

F3
WTBHD

Lk'g Fwd
Install w/ Marks Aft

FB ends here, ea side

Cap w/ 2x1/4" FB, Ctred
No Flange at Stringer Notches



BHD Stiffeners, 5 Plcs
1 1/2" x 1/8" ST
Cntr on Marks, Length to
long end of Marks.

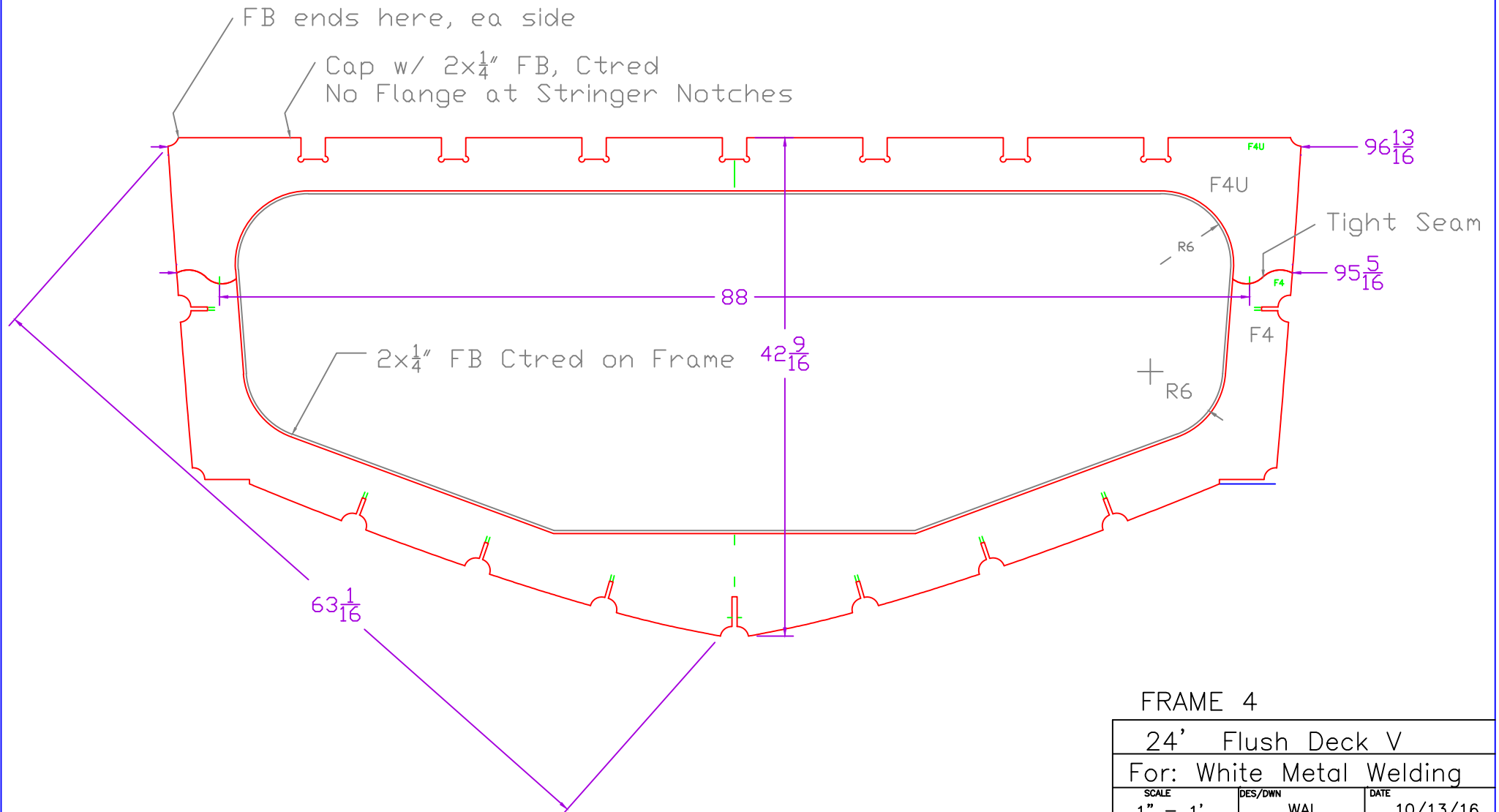
BS2

FRAME 3

24' Flush Deck V		
For: White Metal Welding		
SCALE 1" = 1'	DES/DWN WAL	DATE 10/13/16
Response Marine, Inc.		SHEET
Newburyport, MA, www.responsemarine.com		DWG NO. 538-F3

REV.	DESCRIPTION

F4 Lk'g Fwd Install w/ Marks Aft

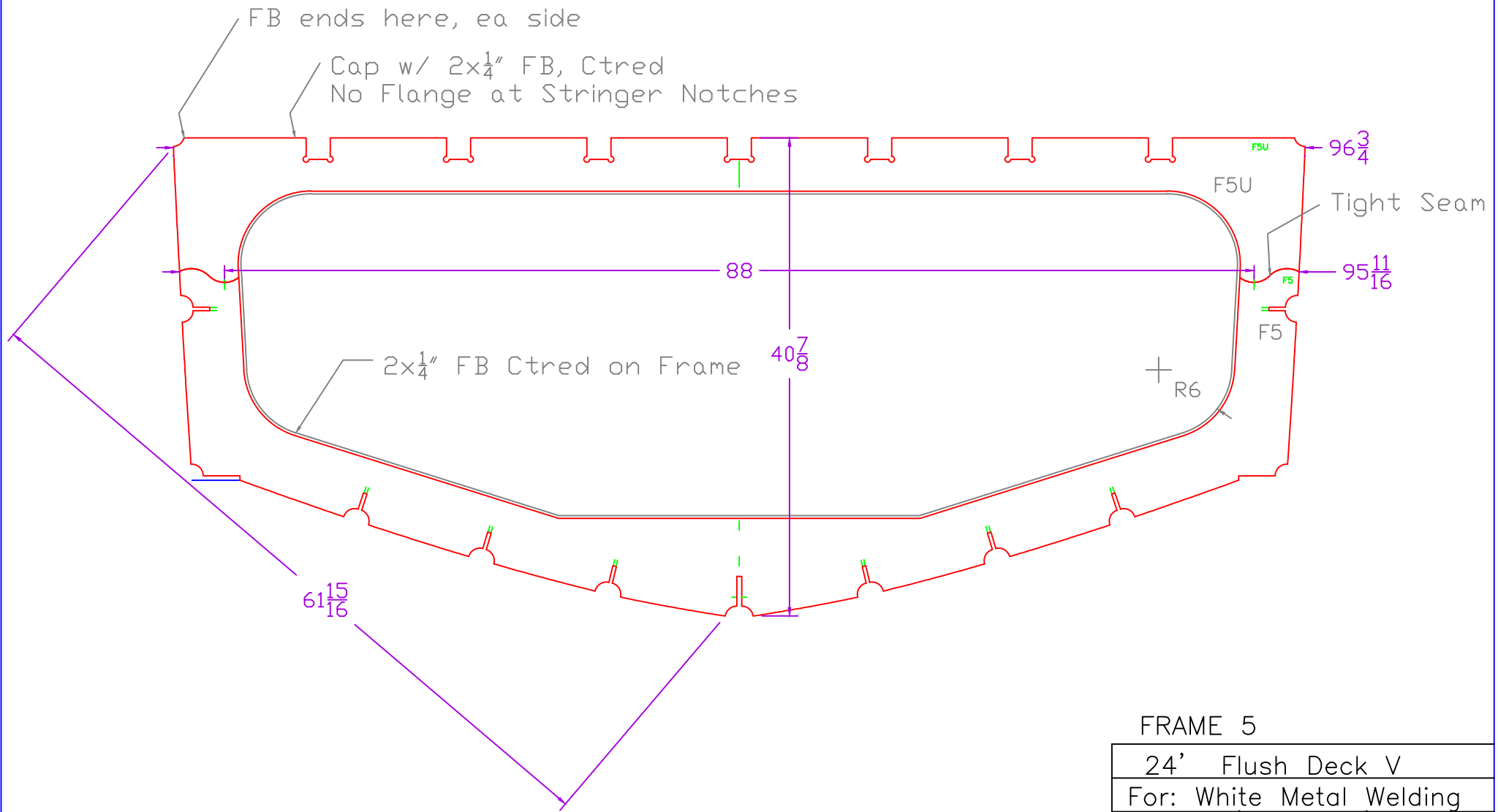


FRAME 4

24' Flush Deck V		
For: White Metal Welding		
SCALE 1" = 1'	DES/DWN WAL	DATE 10/13/16
Response Marine, Inc. Newburyport, MA, www.responsemarine.com		SHEET DWG NO. 538-F4

REV.	DESCRIPTION

F5 Lk'g Fwd Install w/ Marks Aft

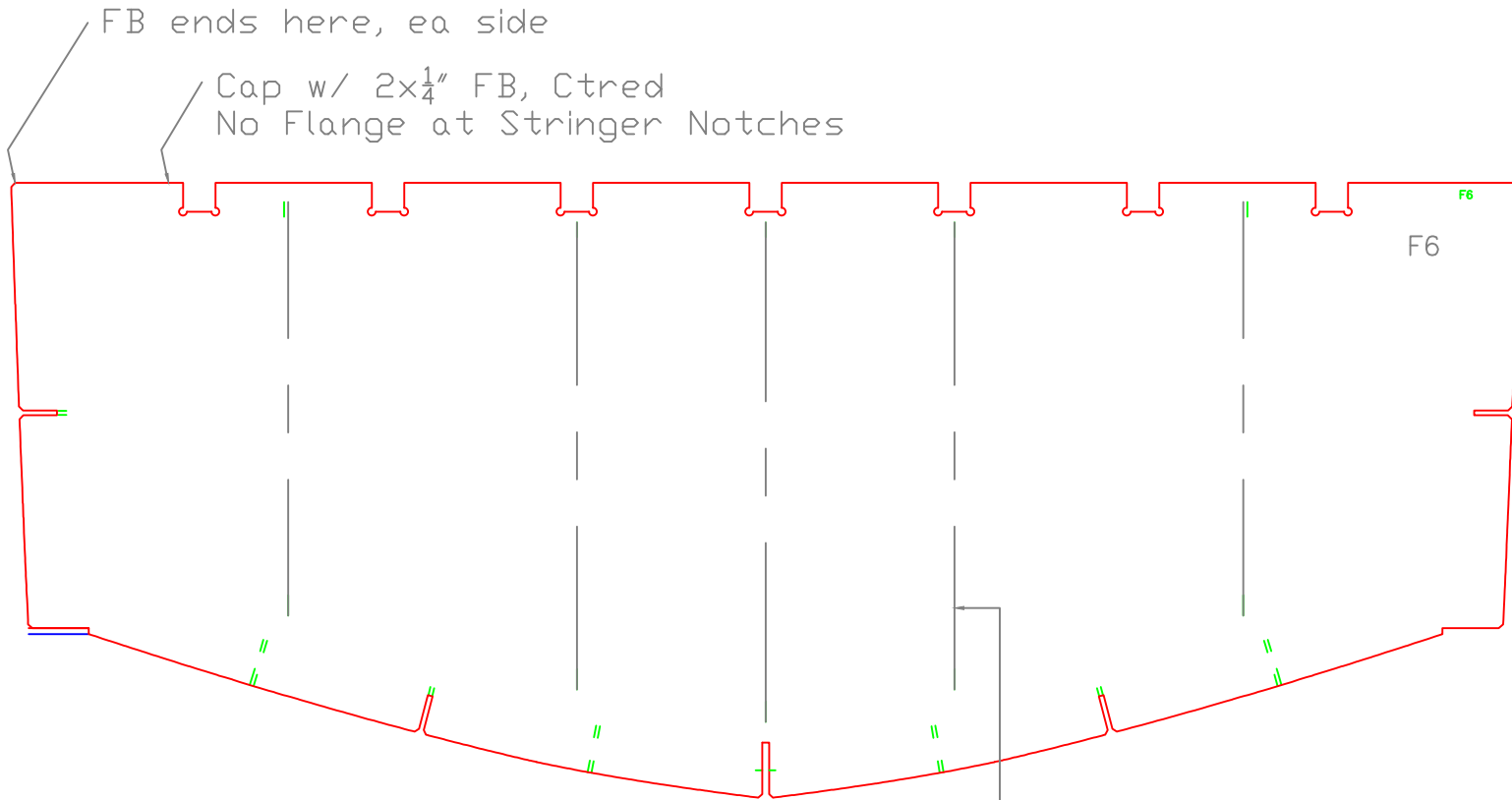


FRAME 5

24' Flush Deck V		
For: White Metal Welding		
SCALE 1" = 1'	DES/DWN WAL	DATE 10/13/16
Response Marine, Inc. Newburyport, MA, www.responsemarine.com		SHEET DWG NO. 538-F5

REV.	DESCRIPTION

F6 Lk'g Fwd
 WTBHD Install w/ Marks Aft



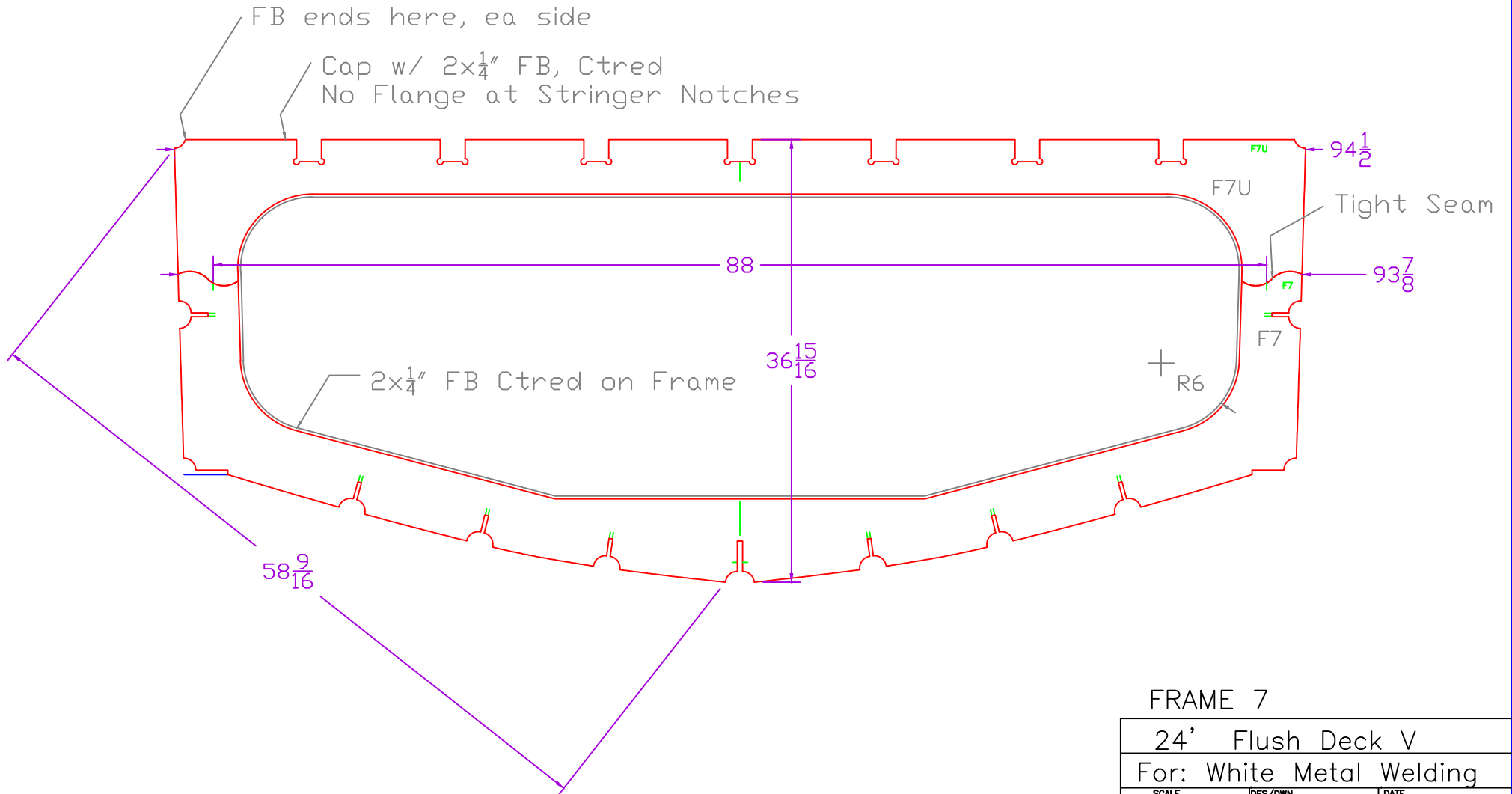
BHD Stiffeners, 5 Plcs
 $1\frac{1}{2}'' \times \frac{1}{8}''$ ST
 Cntr on Marks, Length to
 long end of Marks.

FRAME 6

24' Flush Deck V		
For: White Metal Welding		
SCALE 1" = 1'	DES/DWN WAL	DATE 10/13/16
Response Marine, Inc.		SHEET
Newburyport, MA, www.responsemarine.com		DWG NO. 538-F6

REV.	DESCRIPTION

F7 Lk'g Fwd
Install w/ Marks Aft



FRAME 7

24' Flush Deck V		
For: White Metal Welding		
SCALE 1" = 1'	DES/DWN WAL	DATE 10/13/16
Response Marine, Inc. Newburyport, MA, www.responsemarine.com		SHEET DWG NO. 538-F7

REV.	DESCRIPTION